

LC095A-APP Two way car alarm system



car can start normally.

1.14 Alarm reminding and auto-alarm(Optional)

After parking and cutting off engine, the owner closed the door and left the car after 8 seconds, the siren will make a sound "be "be" three times to remind to set the alarm, the transmitter will alarm with vibration, the icon "🔒" and "🔔" will gleam alternately for 5 seconds to remind owner setting alarm. If not alarm within 40 seconds, the arm system will turn into the silent arm status (please set Auto-alarm on transmitter) the door will not lock and the icon "🔒" will blink 5 seconds and then the icon enter into "🔒", and "AUTO-ALARM" icon will be on with music

When set AUTO- Alarm on transmitter, after parking and engine cut off, owner close the door but not arm, owner can press the button "🔔" twice within 5 seconds to disarm the system completely before the Auto-Alarm system working. When in AUTO-ARM status, press the button "🔔" once, and without opening the door, pressing foot brake and switching ACC to on, it will return to arm status and lock.

Note: 1. If the system remind you to wait, the door is opening or Switched ACC to on position ever, Auto-Arm system will not work.

2.If car doors was opened at one time, it will be Auto-Arm system once the car door closed.

* Auto alarm option method:

In disarm status,switch the car key to ON position,and press the reset button for 5 seconds.The siren will chirp for 2 times.The auto-arm system function is activated.And keep pressing the reset button for 5 seconds ,the siren will chirp once.The auto-arm system function is cancelled.

(Note:The factory default setting is OFF)

1.15 Reminding close the door

In arm status, if the door close improperly, the siren will chirp once and the flash light will gleam three times to remind the owner to close the door after 8s.The

5

4 times every 2s after the alarming to remind the owner of alarm being triggered before. It will stop until disarm and turn ACC to on position. If alarm system is triggered by door opening, ACC ON ,or foot brake pressing, the LED light will gleam quickly and continuously until disarm and switch ACC to ON position.

1.25 Triggering Memory

In arm status, if the system triggered to alarm, the triggering information would be recorded. When disarm and open the door, the main unit will emit a sound to remind car owner to check the car since the alarm was triggered. Turn ACC to ON, the LED light will stop gleam.

A.Alarm triggered by hit, to remind the car owner, the siren will sound like "Du-Du" twice .The siren will not chirp if it is in the silent arm status. LED light will gleam to remind the owner of alarm being triggered by hit and to check the vehicle. Switch ACC to ON position, LED light will stop gleam.

B.Alarm triggered by side door opening , ACC, foot brake the siren will emit sound "Du-Du-Du-Du"for four times, LED light will gleam continuously remind the car owner to check vehicles.The LED will stop gleam until turn ACC turns on. .

When system disarmed , the car owner opens the door ,the triggering memory will remind the car owner that the alarm system was triggered. If ACC ON , it will delete the triggering memory.(when it is disarmed without ACC on, open the door two times, every time will trigger to alarm, and then the memory will be deleted except the LED indicator.)

1.26 Power status reminding

When battery power is low, press any button on the transmitter to finish corresponding action, it will emit a warning tone to remind the battery power is low. Meanwhile, the battery icon will show the corresponding electric quantity. There are total four bars, if have four means full power;

10

Button Functions:

Arm	Disarm	Silent Arm	Car Finding	Trunk Release

1.1 Sound /Flash Arm

After parking ,take the keys off and close all the doors ,then press the button "🔒" to lock the door. The LED indicator will gleam, the flash light will gleam once, the siren emits a "Bi" sound once .Then the system will be in sound / flash arm status. (shock sensor are working) .Then the transmitter will emit "Bi" sound once. Meanwhile, the icons "🔒" and "🔔" on the screen will light on, the side door icon gleam twice ,and the background light will also light on.

1.2 Silent Arm

After parking ,take the keys off and close all the doors ,then press the button "🔔" once to lock the door. The LED indicator will gleam, the flash light will gleam once, the siren will not chirp.Then the system will be in silent arm status (shock sensor are working) .Then the transmitter will emit "Bi" sound once. Meanwhile, the icons "🔒" and "🔔" on the screen will light on, the side door icon gleam twice. To press "🔔" button again, the LED ligt will gleam once ,flash light will gleam once. The siren will not chirp then the system will be in High-level Silent Arm Status (shock sensors and ultrasonic sensors are working), then the transmitter will emit "Do-Re-Mi" sound once. Meanwhile, the icons "🔒" and "🔔" on the screen will light on, the side door icon gleam twice.

1.3 Shock Sensor

In arm status, if shock sensor is triggered by hit first time, the siren will chirp 5 times the flash lights will gleam at the same time and the engine will be locked .Then the transmitter will make sound like "Bi" for 5 times with vibration for one time to remind and warn the car owner,and the shock and flash lights icon will light on at the same

1

transmitter will emit a sound "Bi-Bi" or vibrate 5 times to remind the owner. And the side door icon will gleam, the background light will light on o remind the owner close the door. Car owner should disarm first, and close the door and then set the system into arm status. If not close the door well after 48 seconds, the siren will chirp, the flash light will gleam simultaneously. The side door icon and flash light icon on transmitter will gleam for 30 seconds, the background light will light on. And transmitter will make a sound like "Bi-Bi" for 30 seconds and vibrate 8 times after alarming .If still not close the door well after brain unit and flash/sound alarm for one cycle, then the main unit and transmitter will stop alarming only disarm or close the door well. After 4 minutes will stop alarm (system will still detect other triggers)

1.16 Re-arm(Anti-false disarm)

In arm status, if press the button "🔔" to disarm but car door is not opened within 25 seconds. the system will rearm automatically by itself as it is regarded as false disarm. And the door lock sound will come from the transmitter and the transmitter will vibrate once to remind the owner that system is in arm status. It will emit a "Du"sound in the flash/ light arm status , and it won't sound in silent arm status. In arm status, press the button "🔔"to disarm, if detect out the door opened in 0.5 seconds after being locked (the dome light will be lighted up). If detect out the ACC or footbrake is not triggered within 55 seconds, the system will regarded it as false disarm and return to previous arm status automatically. It will emit a door lock sound to remind owner the system in arm status.

1.17 Central door locking automation

Driving for 15 seconds then pressing the footbrake, the central door locking system will lock automatically; While the system will unlock automatically when the engine is cut off.

If the car door not closed well, after driving for 15s if press the footbrake ,the main unit will remind the driver with a sound "DU" and flash light will gleam once.

The system will not lock the door if the door not closed well at this moment. After

6

if the battery icon only have the frame means that need to exchange. When not press the button, sensor will detect the battery at any time. If the sensor detected that the battery power is low , it will show the remaining bars only without warning tone.

Note: When Battery is low, it will affect the remote distance.

1.27 TIME,ALARM,AUTO-ARM,START setting

🕒Keep pressing the button "🔒" and "🔔"for 1 second simultaneously to enter into the setting mode, the transmitter will sound once and "🔒" will gleam at the moment.

🕒Then press the button "🔒" to switch settings (times/minute→ time/hour →Alarm Clock On/Off→ Alarm clock /Minute→Alarm clock /Hour→Exit) circularly. Corresponding icon will flash.

🕒Press the button "🔔"to adjust the setting data, then press the button "🔒" for the next setting adjustment. Press the button "🔒" and "🔔" at the same time for 1 second can save the setting mode and then exit the setting.

Parameter Setting:

🕒Time: hour and minutes setting

🕒Alarm:To set the alarm clock on/off,hour,munite; When the alarm-clock rings, the alarm clock icon will gleam and the background light will light on

🕒AUTO-ARM: To set the the system enter into arm status automatically, ON means arm automation will work when the car door close well on roughly 30s. OFF means the arm automation will not work when the door close well on roughly 30s.

🕒START:To set the time engine start ON/OFF, Hour/Minute;When time to engine start ,the "🔔"icon will gleam on the remote, the will start automatically, and the background light will light on.

🕒Remote control alarm mode option:when the alarm mode icon gleam,

11

time.If it is triggered again by hit within 15 seconds,then the siren will chirp loudly for 30 seconds with flash lights gleaming.The transmitter will make sound like "Bi-Bi-Bi" for 30 seconds,then vibrate for 8 times,vibrating icon and flash lights icon will be light on.After alarming,the system will return to previous status. Note:In silent arm status,the siren will not chirp,others are same as Sound /Flash Arm mode.

1.4 Microwave sensor(optional)

In arm status,if somebody or object is moving around for 0.8s and is detected by microwave sensor, the engine will be cut off, the flash light will not light on ,and siren will chirp 5 times to enter into first-level arm status. At this moment, the transmitter will emit sound like Bi for 5 times with vibration for one time , flash lights will gleam , to remind and warn the car owner.The icon of headlight and "🔔"will be on,the background light will be on,the transmitter alarm circularly once; If somebody or object is moving around for 0.8s and is detected by microwave sensor within 15s,then the engine will be cut off,the flash lights will gleam,the siren will chirp loudly for 30seconds to remind and warn the car owner,then enter into second-level arm status.The transmitter will remit a sound like "Bi-Bi-Bi" for 30 seconds,the icon of headlight and "🔔"will light on,the background light will light on,and the transmitter will vibrate for 8 times after alarming.

In silent arm status,the siren will not chirp,others are same as Sound /Flash Arm mode.

In disarm status, press the button"🔒" or "🔔"once,to set arm mode without microwave sensor working ,press the button"🔒" or"🔔" twice,to set arm mode with working of microwave sensor function.

1.5 Door Intruding alarm

In arm status, if car was opened or foot brake is pressed, it will trigger system to alarm. the siren chirping for 30s,the flash light will gleam, the engine will be cut off.Side door icon and flash light icon will flash and background will light on.The transmitter will make sound as"Bi-Bi-Bi"for 30s and will vibrate 8 times after

2

another 15s press the foot brake ,main unit will also emit a sound "du"once, and the flash light will gleam once at the same time. When close the door well and press the foot brake after 15s, the central door lock will lock automatically. When driving: Press the button "🔒" will lock the car, and press the button "🔔"will unlock the car.

1.18 Remote engine start

In arm status,press the button"🔔"for at least 3s to start the engine.A beep sound emits from the transmitter,LED on the brain unit will flash once, and the siren will chirp once.ACC,ON1 ,ON2 will output.When ACC exits after 5s,the engine starts 0.8s. If start successfully,the flash light will light on.And will flash once a second, then will stop after engine starting the car successfully 12mins. If not start successfully,ACC,ON1,ON2 will stop output, and will output again after 2s.When ACC exits after 3s,the system will start 1.2s.If still can not start successfully ,the system will engine start the third time, and start time will be 1.7s this time.

A.There is only one start cycle (that is,total three times) for each operation to engine start. If the start is not successful after three times, you need to repeat the operation;

B.During the engine start process, press and hold the "🔔" button on the remote control for more than 3s to send out a engine cut-off signal, then exit the engine start mode and return to the previous arm status (shock sensor will not work within 5s);

C.During the engine start process, if you need to drive the car, press the "🔔" button on the remote control first to unlock the door, and the car key must switch to the ACC to ON position within 30 seconds, otherwise it will return to the previous arm state;

D.If the start is unsuccessful, the brain unit will return to the previous arm state;

E.If the handbrake is not activated, the brain unit will not allow to start with the remote, the siren will chirp three times, the flash light will flash three times, and it

7

ON mean shock mode,OFF means sound mode.

🕒Exit: press the button "🔒" and "🔔"simultaneously, then save and exit the setting mode. The transmitter will emit a warning sound and then return back to standby mode and time display.

1.28 Background light

Press the button "🔒" and "🔔"once simultaneously, the background light will light on for seeing the time on screen at night easily.

1.29 valet/service mode

1.Switch ACC to the ON position, keep pressing "🔒" button for 2s , the transmitter will emit a sound "Bi". After 5s, then press the "🔔" button, a sound "Bi" from siren remind the valet mode has been activated, and the LED indicator will be on all the time.(When the valet mode is activated ,the transmitter can open or close the door, no matter if the ACC switch on or not. If use transmitter to release the trunk, other functions will be shield) In valet mode, then keep pressing "🔒" button for 2 seconds ,the siren will chirp 2 times.LED indicator will off to remind valet mode has been exited successfully.

2.Switch ACC to the ON position, press reset button for 5 times , the siren will chirp once the LED indicator will be on all the time to remind the owner the valet mode is activated successfully.In valet mode,press reset button 5 times,the siren will chirp 2 times,the LED indicator will be off to remind valet mode has been exited successfully.(When the valet mode is activated ,the transmitter can open or close the door, no matter if the ACC switch on or not. If use transmitter to release the trunk, other functions will be shield)

(Note:The factory default setting is OFF)

1.30 Door detecting and dome light delay

1.When press the button to enter into arm status, if detected the side door

12

alarming.The system will return to previous status after alarming.

1.6 ACC ON Triggered

In arm status, Switch ACC to ON position. The siren will chirp for 30 seconds, the flash light will flash, and the engine will be cut off, the trunk release icon and flash light icon on the transmitter will gleam, and the background light will be light on. Meanwhile, the transmitter will sound as "Bi-Bi-Bi" for 30 seconds ,and will vibrate for 8 times after alarming.The alarm system will return to the previous status after the alarm.

1.7 Emergency Alarm

In arm status, any trigger, such as door opened, ACC ON, foot brake pressed will make siren to chirp for 30 seconds, the flash light will flash, the engine will be cut off in this situation. Meanwhile, the side door and trunk icon will blink on screen of the transmitter, and background light will light on, the transmitter will emit a sound "Bi-Bi-Bi"for 30 seconds or vibrate several times and will start to vibrate for 8 times after alaming. The system will return to the previous status after alarming. If the vibration is triggered in Emergency alarm status simultaneously, the vibration icon will be on screen and background light will light on.

Note: No matter what kind of alarm triggering, the engine will be cut off for 40 seconds. The alarm system will return to the previous status after alarming. In arm status,the alarm can be triggered since the same reason. If the sensor detected a reason that triggering alarm constantly, the system will alarm for 4 minutes, and then will stop automatically. All sensors will restart to detect when other sensors are triggered, but still can detect the trigger reason.If still detected another reason that is triggering alarm constantly ,it will alarm another 4minutes

1.8 Siren Pause

In arm status ,besides press the button "🔔"on the remote to pause siren chirp, you can also press any button on remote to pause the alarm . Meanwhile, the arm system will return to previous status , and two transmitters will also stop alarming.

1.9 Disarm

In sound /flash arm status, press the button "🔔"once to unlock doors, flash lights

3

will return back to the previous arm state;

E.When you need remote start your car,please ensure that the gear is put in Neutral the handbrake must be pulled up. Otherwise, the company will not be liable for any accidents caused by a car crash; Cannot remote engine start when in disarm status

1.19 Timer Engine Start

In arm status,when you set the time to engine start,lease make sure that it should be operated in neutral position and the hand brake is held on.

Once the engine has been started,the icon "🔔"will gleam at the same time ,the buzzer will chirp three times shock once the car will be warming-up for 12 minutes;After 12 minutes,the engine will be cut off automatically and return back to previous status; During the warming-up,press "🔔" button for 3s above, engine will be cut off and return back to previous arm status.

During the warming-up,you need to drive the car,please press the "🔔"button first ti unlock the car,must switch the car to ACC ON position within 30s,or will return back to the previous arm status.

If not start successfully,the brain uni the remote will return back tot the previous arm status.

Note:A.This function will not allow to be activated if the hand brake handle is not held on .The system will not all start at the tiem,the siren will sound for 3times and flash lights will flash 3 times.Then it will rearm.

B.The company will not responsible for any crash accident if the car is not operated in neutral position.

C.Can not disarm when disarm

1.20 Temperature display in the car

a.Every time you arm or disarm the car ,the transmitter will display the temperature in the car and then change to clock display(3:4).

b.When starting successfully,the transmitter will display the temperature and start

8

closed improperly, the system will remind every 8s. If detected the door still not close well, the system will remain detecting till 45s. After 45s, it will alarm directly if the door still closed improperly. If detected the door closed well at any time within 8s to 45s, the system will enter into arm mode. The prompt is just limited to the first 8 seconds only, and 9 to 45 seconds won't remind.

2.Press unlock button in auto-arm status, the system will detect for 0.5s. If a signal output from the side door (the system can identify if the car is fitted with dome light), will enter into arm status after 45s. If there is no signal output from the side door, the system will identify that there is no dome light function. After 25 seconds, the system will enter into the arm status .

1.31 Code learning

Method 1: Keep pressing the footbrake,and switch the key to ON position for 8 times.Then keep it in ON position in the eighth.Flash light will light on. Then press any button on the first transmitter within 10s, the siren will emit the "du" sound once. That means the code learning for the first transmitter is successful. Press any button on the second transmitter within 10s.,the siren emit a"du" sound 2 times, that means the second transmitter code learning is successful. Take off the key aftercode learning.

Method 2: Keep pressing the code learning button above 2s, LED light will light on. Then press any button on the first transmitter within 10s, the siren will emit the "du" sound once. That means the code learning for the first transmitter is successful. Press any button on the second transmitter within 10s, the siren emit a"du" sound 2 times, ,that means the second transmitter code learning is successful. After learning over 10s,the system will exit the code learning mode.

Note:One brain unit only can match two transmitters at most once.

1.32 Horn Siren/Electronic Siren option

If choose Electronic Siren with JP7"-", siren will keep chirping

13

will gleam twice, the siren will chirp twice, then return back to the disarm status. The transmitter will emit a sound "Bi,Bi" twice, the side door icon will be on for roughly 5 seconds, and the icon "🔔" will also be on at the same time, background light will light on.

When disarm in silent arm mode, except the siren will not chirp, other functions are same as the sound/flash mode.

1.10 Remote trunk release

When engine is cut off, keep pressing the button "🔒"and "🔔"simultaneously or press "🔔"button for one second or more to release the trunk (A trunk release motor must be fitted for this trunk) .Three Twitter sound will emit from the transmitter, then the trunk release icon will light on for 5 seconds after gleaming three times, and background light will light on to remind the trunk release successfully.

Note:In arm status, the shock sensor will not be triggered to alarm,but side-door triggering,foot press triggering,and ACC triggering will make system to alarm.

1.11 Anti-hijacking

When driving, keep pressing the button "🔔"for 2 seconds or above to enter into Anti-hijacking function , the light will flash urgently, the siren will chirp loudly and flash light will flash. the engine will be cut off automatically after 20 seconds ,only press the button "🔔"can disarm .

1.12 Door opening flash lights setting(optional)

Switch ACC to ON position, keep pressing the button for 2 seconds, the siren will chirp twice to set door open with flash lights function. Keep pressing the button "🔔"for 2 seconds to cancel this function, the siren will chirp once.

(Note:Factory default setting is on)

1.13 Emergency Disarm

When you lost remote or other reason can not disarm, the owner can open the door by car key, and press reset button 10 times to disarm. After disarm, the

4

remaining time alternately(3:4).

Note:The displayed temperature may be different from the actual temperature because of the different installation position.

1.21 Car finding

If the car owner doesn't know where is the car,you can find your car according below three methods:

A.Keep pressing the button "🔒" for 2s, the siren will chirp for 10s at the moment, and the flash light will gleam at the same time. Remind owner the car position with sound/ flash.

B.Keep pressing the button "🔔", the flash light will gleam for 10s but without siren chirping. To remind owner with flash.

C.Tap the "🔔" button once ,the siren will chirp for 10s at the moment,and the flash light will gleam at the same time. Remind owner the car position with sound/ flash.

D.When driving ,press the "🔔" button once,the siren will chirp 10s,and the flash light will flash simultaneously.Remind to overtake with sound/ flash.

Note:No matter the main unit remind with sound / flash or flash, press any button will stop car reminding.

1.22 Power off memory

In case the system is powered off, the setting status will be recovering once powered on,no matter how time goes.

1.23 Window roll up automation

When in sound/flash arm status,silent arm status or Auto-arm status, the power window lifting s lifting signal will output for 20s.

1.24 LED indicator

In arm status, LED light will gleam 2 times every 2s to remind the owner and warn others that the car is in arm status. If the alarm is triggered by hit or microwave, the LED will gleam quickly and constantly when in arm status. The LED will gleam

9

If choose Horn siren with JP7 "+", siren will chirp intermittently

Factory default setting is "-", Electronic siren

1.33 Flash light Option

If choose JP2 jumper"+", the system only detect the orginal central door lock signal,not detect the flash light signal

If choose JP2 jumper"-", system will detect the central door lock signal and the flash light signal at the same time. Factory default setting is "-"

1.34 Central Door Locking Signal Positive/Negative for Option

If choose JP3 jumper"+",the central door locking input signal should be positive.4

If choose JP3 jumper"-",the central door locking input signal should be Negative.4

Factory default setting is "+"

1.35 Central Door Unlocking Signal Positive/Negative Option

If choose JP1 jumper"+",unlock input signal should be positive.4

If choose JP1 jumper"-",unlock input signal should be Negative.4

Factory default setting is "+"

1.36 Trunk release output positive/Negative option

If choose JP5 jumper"+",trunk release signal should be positive

If choose JP5 jumper"-",trunk release signal should be Negative.4

Factory default setting is "+"

1.37 Siren onput positive/Negative option

If choose JP6 jumper"+",siren input signal should be positive

If choose JP6 jumper"-",unlock input signal should be Negative.4

14

Wiring Diagram

Factory default setting is "+"

1.38 Electronic/Pneumatic Central Lock Option:

When choose JP4 jumper "-", if press " " and " " button, lock or unlock output time is 0.5s. It should be used in car with electronic lock
 When choose JP4 jumper "+", if press " " and " " button, lock or unlock output time is 3.5 s. It should be used in car with pneumatic lock
 Factory default is electronic lock, JP4 jumper "-"

Headlamp automatic sensing:

Headlamp automatic sensing(optional)

A. Automatic Headlamp sensing:

When the automatic headlamp sensor switch is ON, When the car key is switched to the ON position, and the headlamp will be on automatically when the car drives in night, a tunnel, garage, or other dark environments.

B. Headlamp delay off function:

When the headlamp sensing switch is ON, car flameout(car key can switch to OFF position), when the car headlamp will be OFF after 20s.

C. Low Beam & High Beam Automatic switch function:

When the headlamp sensing switch is ON, switch the car key to ON position, the low beam will be on automatically, and when in dark night the high beam will be on automatically to avoid wasting electronic power

D. Automatic Headlamp sensing:

When the automatic headlamp sensor switch is ON, when you press disarm button in the dark night, the headlamp will light on for 20s, so that you can find your car easily in dark place.

brain unit add engine start function:

Smart engine start push button(optional)

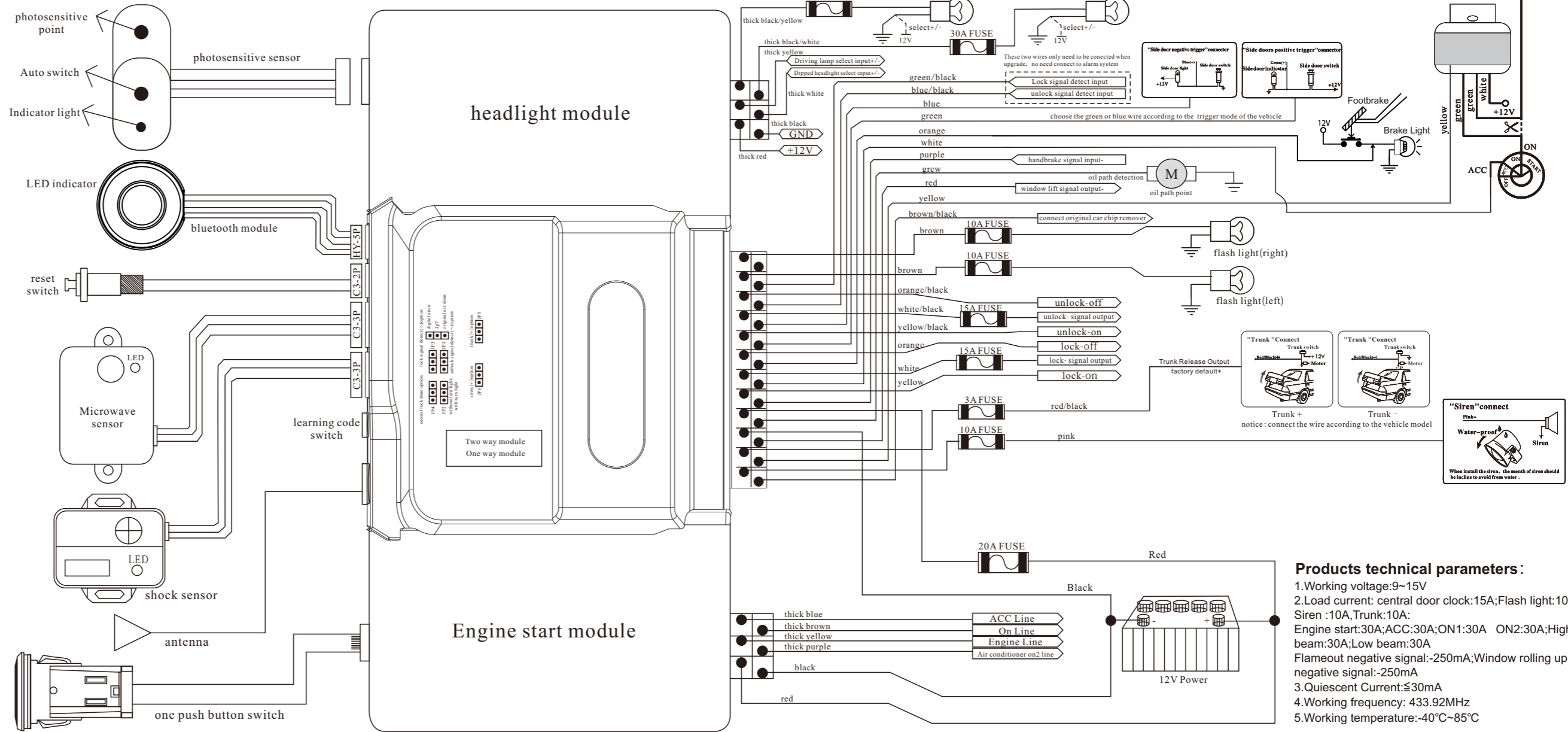
1. Tap the remote "Disarm" button after 30s, press foot brake and then press the push button once, then the car will engine start, if the car engine start successfully, the light in purple color on the push button will light on, then car owner can drive the car normally; If you can not engine start successfully, the car owner can start for the second time, and third time, and the time will be longer.

2. There is three times as a process for the engine start, if the three times are not successful, the owner can continue to start, but the start mode always keeps the third ignition mode.

3. When parked the car, pull up the handbrake or press the footbrake, then press the push button once, the light on the push button will be off.

Push button engine start precaution:

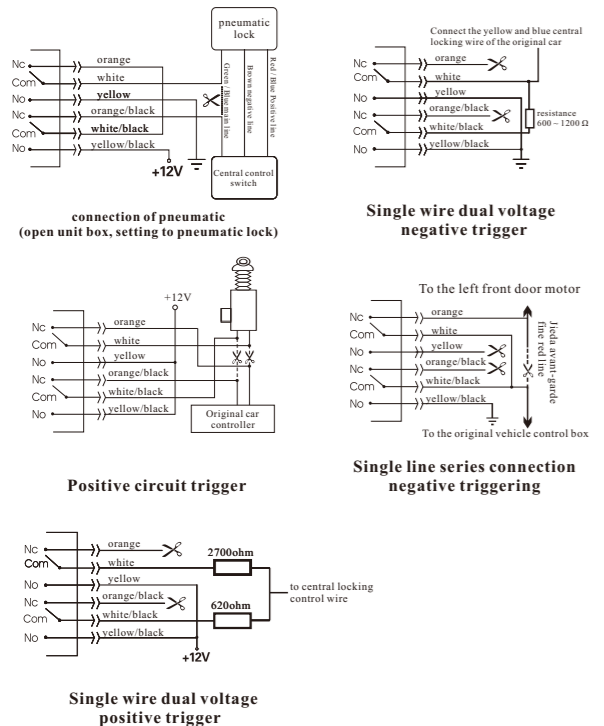
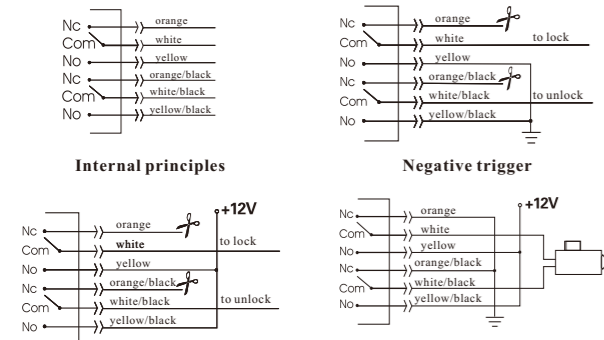
1. If need to use push button to engine start the car, have to press the footbrake and press the push button to remote start the car.
2. If press "Disarm" button over 30s, push button can not work
3. When driving, the brain unit detected the signal, if do not pull up the handbrake or press the footbrake, then push button will not work.
4. In arm status, disarm then open the door within 30s, The system will limit start time from the timing when the door is opened.
5. Emergency engine flameout: To prevent the handbrake button broken, keep pressing the push start button for 5 seconds to flameout.



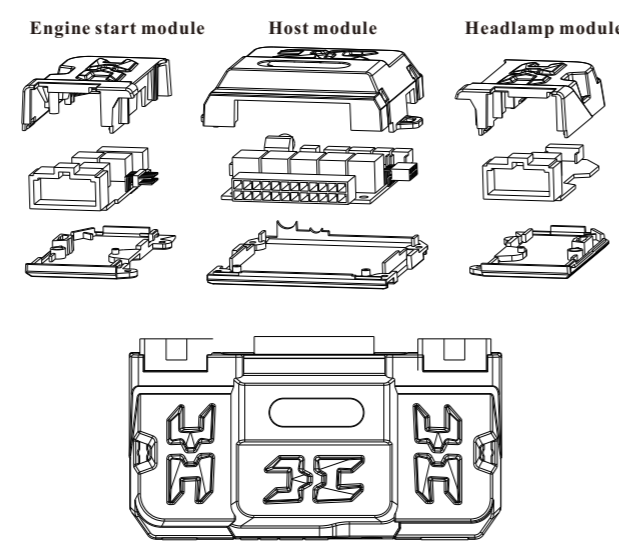
Products technical parameters:

1. Working voltage: 9~15V
2. Load current: central door clock: 15A; Flash light: 10A; Siren: 10A; Trunk: 10A; Engine start: 30A; ACC: 30A; ON1: 30A ON2: 30A; High beam: 30A; Low beam: 30A
3. Quiescent Current: ≤30mA
4. Working frequency: 433.92MHz
5. Working temperature: -40°C~85°C

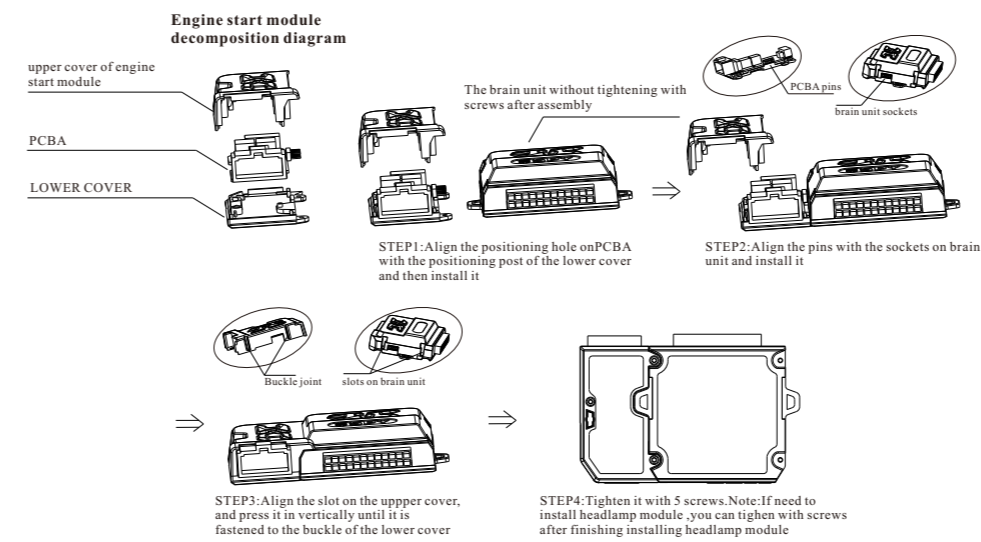
Central Door Lock Wiring Diagram



Product Structure



Brain Unit+Push button engine start module assembly schematic



Brain unit+Headlamp module assembly schematic

