

Grinder

[Coffee Mill smart G_MSG-2-T/TB]

Q. How do I assemble the Coffee Mill smart G (MSG-2-T/TB)?

A. Follow the assembly instructions below.

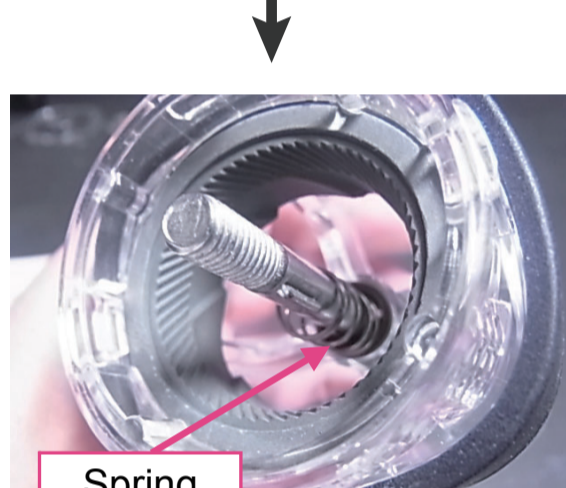
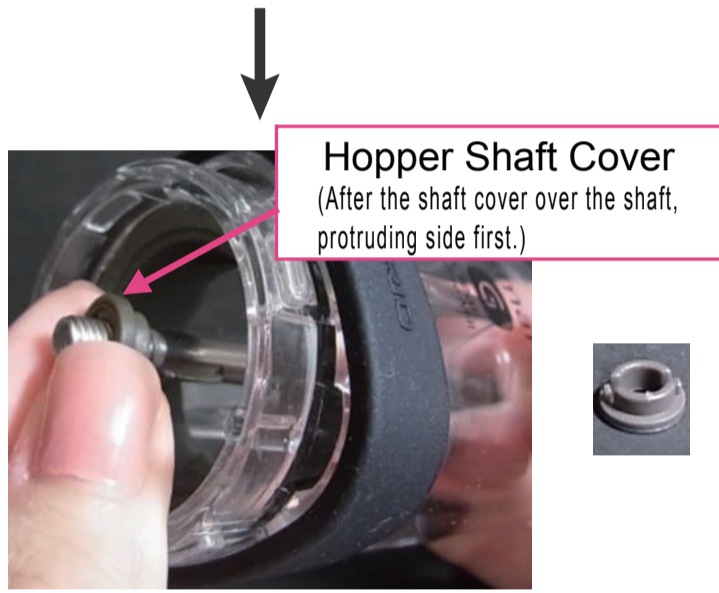
(1) Assemble the parts in the correct order.



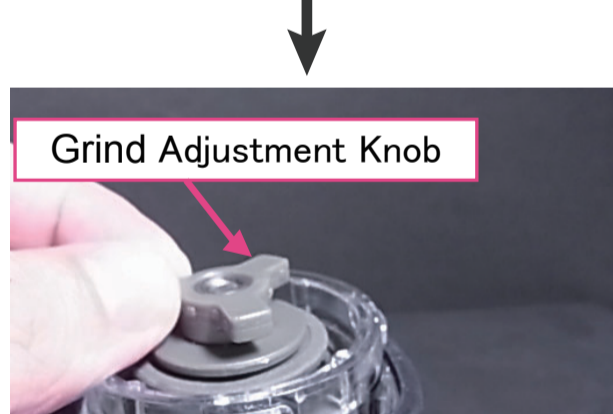
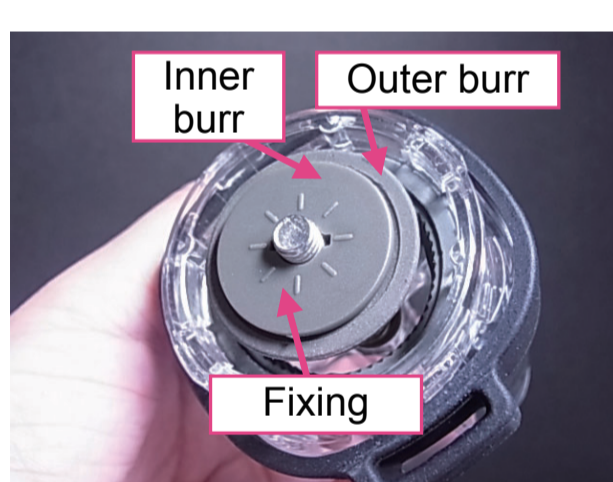
In order from the right hand side,

- 1 Hopper
- 2 Washer
- 3 Shaft
- 4 Hopper Shaft Cover
- 5 Spring
- 6 Outer Burr
- 7 Setting Pin
- 8 Inner Burr
- 9 Lid
- 10 Handle
- 11 Bottle

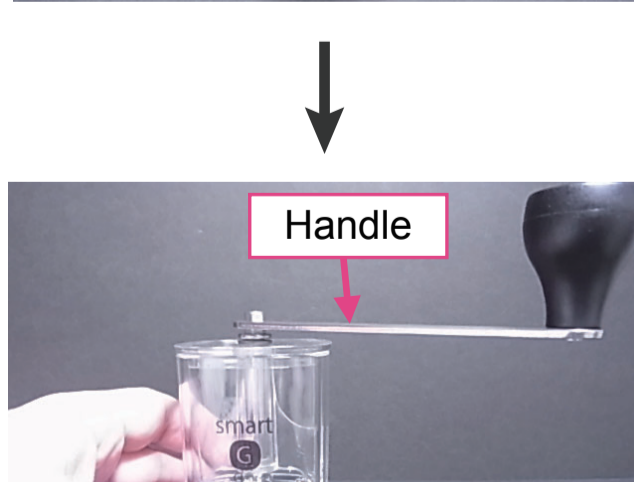
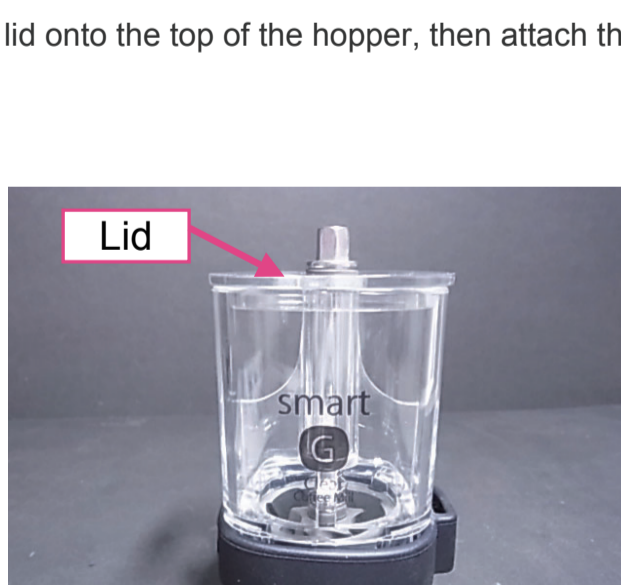
(2) Insert the washer and shaft into the hopper from the top. Next, place the hopper shaft cover over the shaft from below and insert it into the grooves at the end of the body. After this, push the spring.



(3) Attach the fixing pin onto the inner burr, attach the inner burr (with the fixing pin in place) to the hopper from below. Finish by attaching the ground size adjustment knob.



(4) Attach the lid onto the top of the hopper, then attach the handle on the shaft.



(6) Finish by placing the bottle on the assembled hopper.

